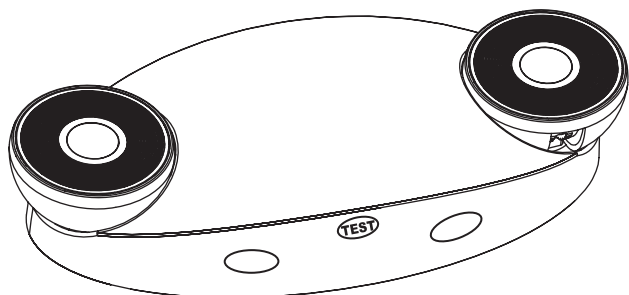


INSTALLTION INSTRUCTIONS

DUAL HEAD LED EMERGENCY LIGHTING FIXTURE

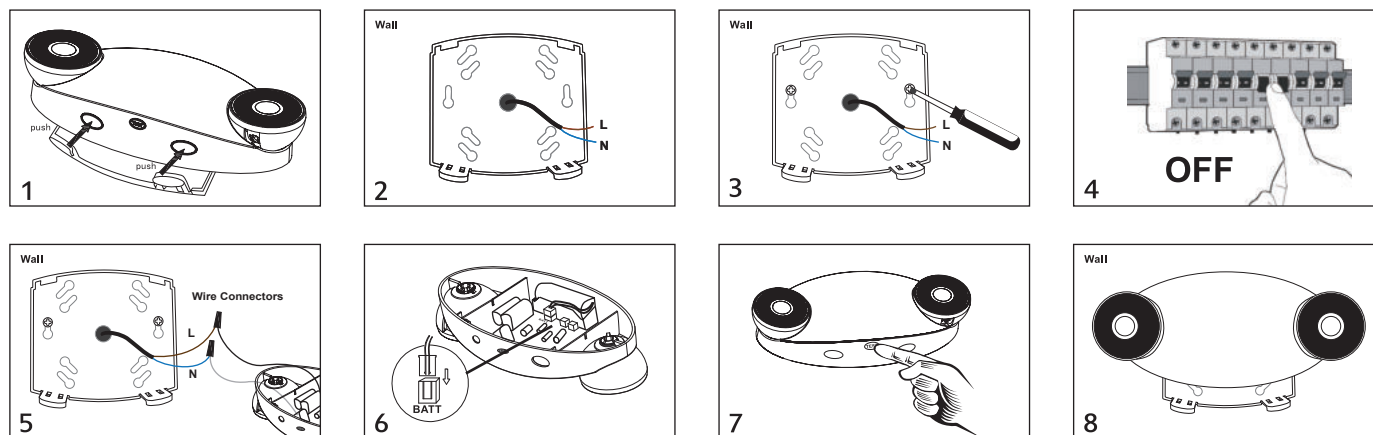


IMPORTANT:

The batteries in lamp are not fully charged when out of manufacturer, and the batteries are disconnected with the lamp. For first use, please connect the battery line with lamp, then fully charged for at least 24 hours. The "TEST" button is used to simulate outage effect, press the button, the lamp is turned on.

Specifications			
SKU	JLEU10	Material	ABS Plastic
Dimension	8.5x3.94x1.77 Inch	Input Voltage	AC120V/ 277V,50/60Hz
Lighting Source	High Power LED	Power	2X 1W
Lighting Brightness	200 Lumens	Lighting Color	6000K
Battery	3.6V 1000mAh Ni-Cd	Mode of Operation	Non Maintained
Charge Time	24 Hours	Discharge Time	>90 Minutes

Installation Method:



1. Press the oval buckles to release the back plate.
2. Cut open the central hole on back plate to cross through the power wires of external circuit.
3. Use expansion screws and steel screws to install the back plate on the wall.
4. Turn off the external circuit to prepare power wires connection.
- 5.* Use wire connectors to connect corresponding wire with external circuit:
White wire is connected with Null Line;
Black wire or red wire is connected with Live Line according to the voltage.
6. Connect battery line with the terminal "BATT" on PCB in the lamp. Turn on the external circuit.
7. Press the "TEST" button to simulate outage effect to test the illumination of lamp.
8. Fix the lamp body on back plate, installation is finished.
9. We recommend professional electrician to operate the installation.



* WARNING:

After connection, another unused live wire should be covered by wire connector.

Lamp and accessories included in package:

1X LED Lamp, 2X Steel Screws, 2X Expansion Screws, 3X Wire Connectors

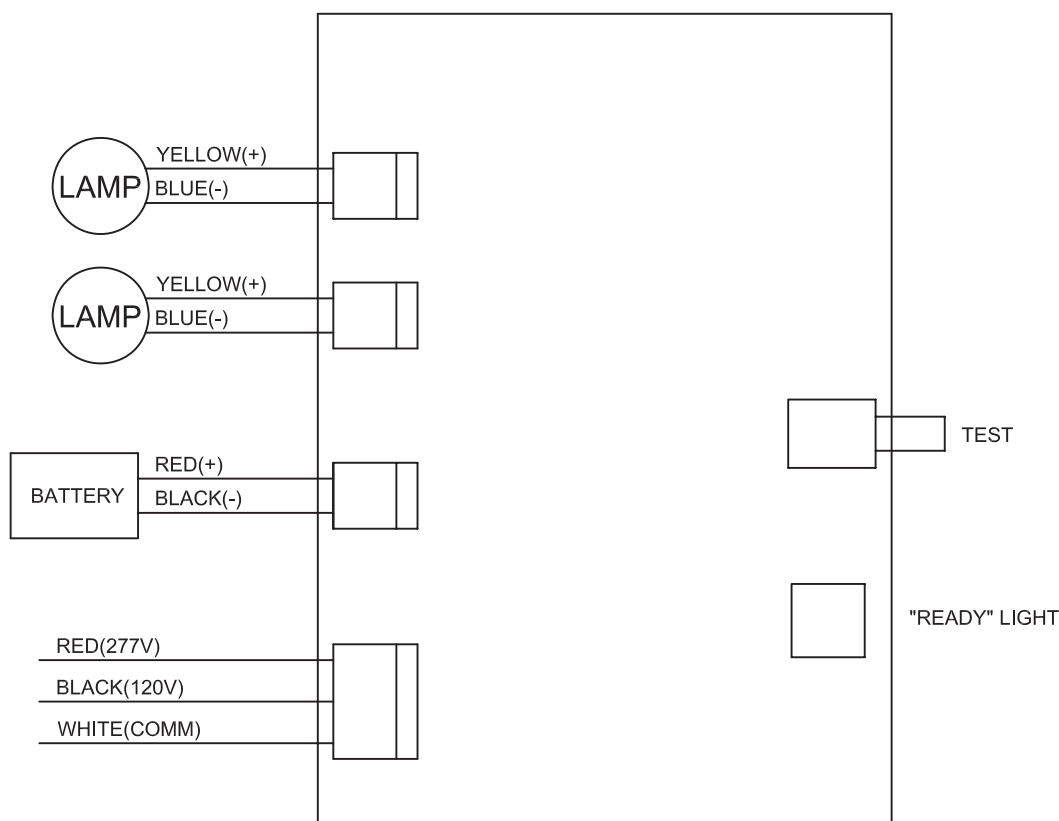
OPERATION:

1. When the power failure occurs, the lamp turns on automatically and illuminate for at least 90 minutes.
2. When the powre electricity is recovered, the lamp turns off and starts to be charged automatically.
3. We recommend periodic lighting test on this lamp every month by pressing "TEST" button. The "TEST" button is used to simulate outage effect.

BATTERY REPLACEMENT:

The battery replacement time is the recommended time according to UL requirements. The battery can continue to be charged and discharged normally after the marked time.

LAYOUT DIAGRAM:



Made in China